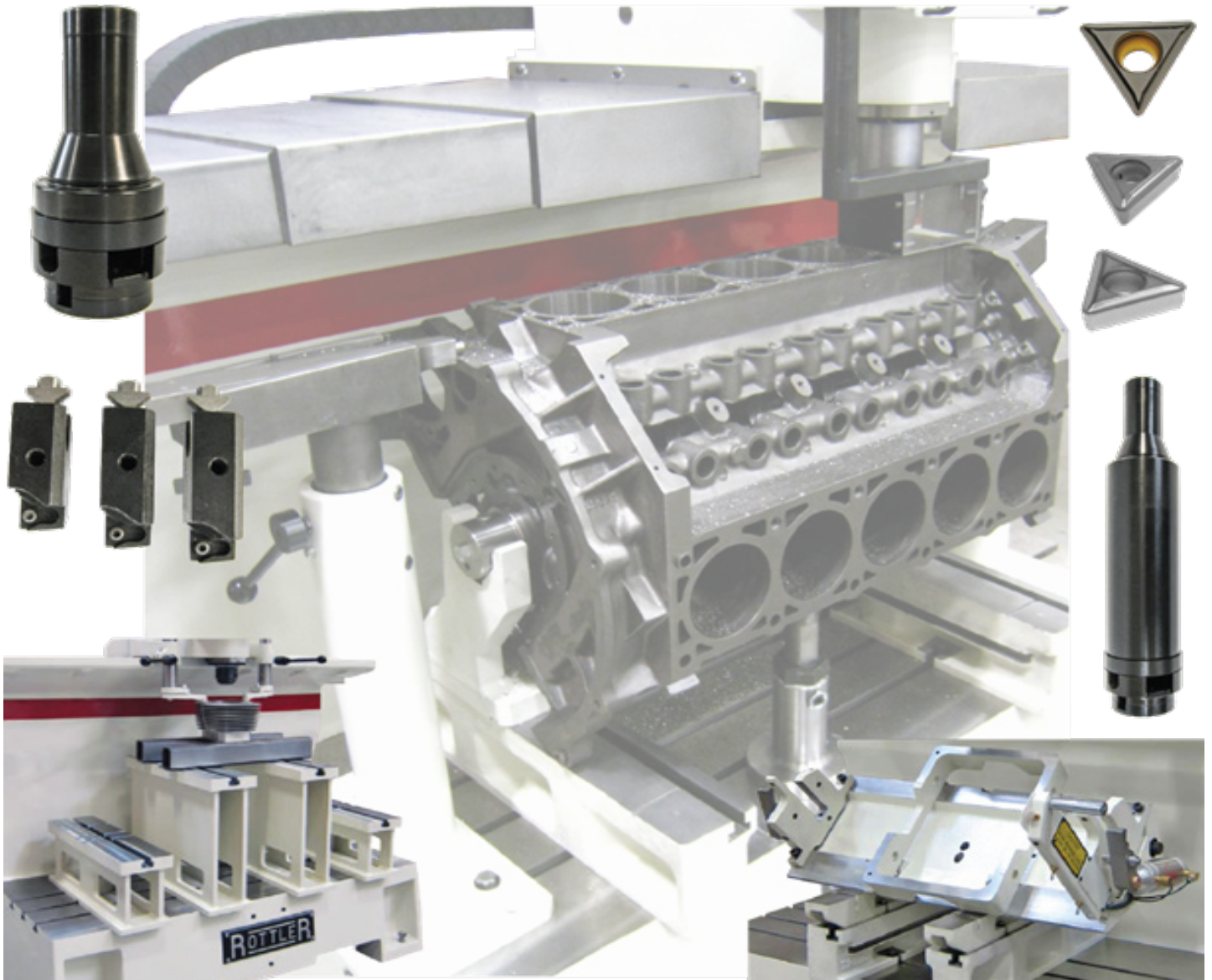


ROTTLER

THE CUTTING EDGE

F10X OPTIONAL

EQUIPMENT CATALOG



ORDERING PROCEDURE

Contact your regional Rottler sales rep for assistance in ordering optional equipment, replacement parts, or tooling.

If you are unable to contact your regional Rottler sales rep, call the factory at 253-872-7050 and ask to speak to the parts sales specialists.

Have the following information handy to expedite the ordering process:

1. Your name, business name, and contact number
2. Customer number
3. If you don't have a customer number, your billing address
4. Shipping address if different from billing address
5. Machine model and serial number
6. Part number and description of what you want to order
7. Preferred method of shipment

You may also contact us via e-mail with the above information. Send e-mail requests to: parts@rottlermfg.com

In some cases you may be requested to send a photo of the part you are ordering if it is a replacement part, or doesn't appear in the database.

If you are unsure which part you need to order, contact our service department and ask to speak to one of our service consultants. They will assist you in determining which part you require.

THERE IS A MINIMUM ORDER OF \$25.00

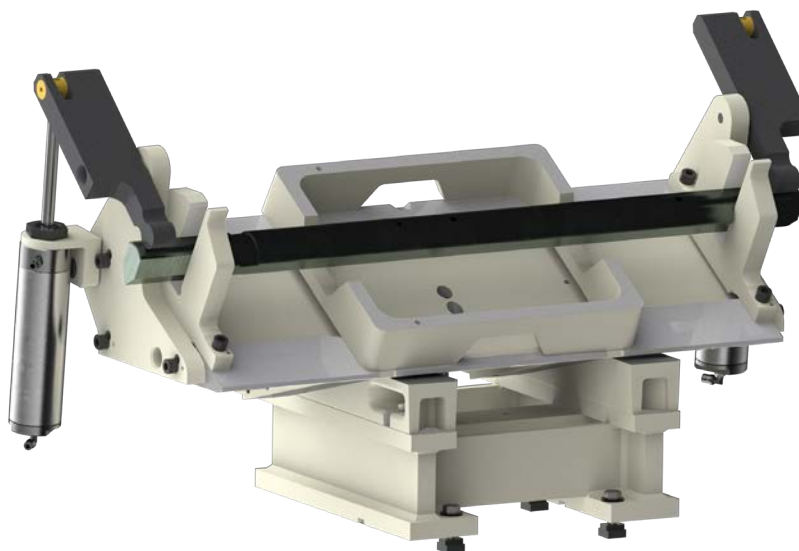
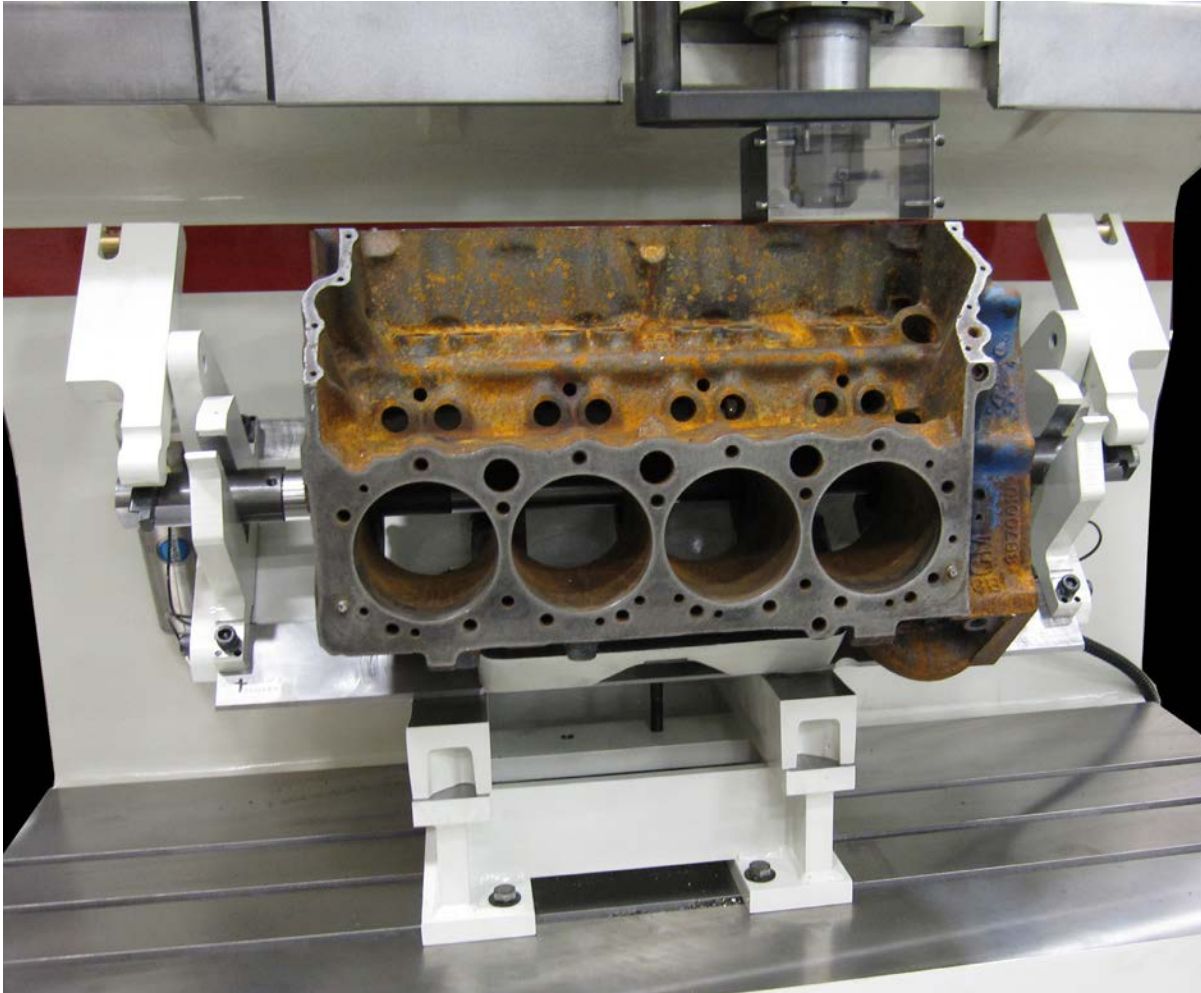
F10X OPTIONAL EQUIPMENT CATALOG

Contents

Fixed Angle Fixtures	1
504-37-10 Production V Block Fixture	1
502-3-48Q In-line Block Frame	2
502-3-49 VW 15-degree V Block Fixture	3
502-3-52 Cadillac Catera 54-degree V Block Fixture	4
Adjustable Angle Fixtures	5
7243 Mid-size Diesel Block Fixture	5
Parallels.....	6
11112 Universal 8" (203mm) Heavy Duty T-Slot Parallels with Air Float	6
11114 Universal 16" (405mm) Heavy Duty T-Slot Parallels with Air Float	7
11115 2" (50mm) X 3" (75mm) Parallels.....	8
Miscellaneous Options	8
7152A Dual Axis Level Assembly.....	8
Boring and Sleeving Cutterhead Assemblies.....	9
504-35-12A Production Cutter Head	9
600-8-4L Production Cutterhead 3.250 - 5.0" (82.5 - 127mm) diameter	10
502-13M Production Stub Cutterhead 2.19 - 4.1" (55.6 - 104mm) Diameter X 6.375" (162mm) Length....	11

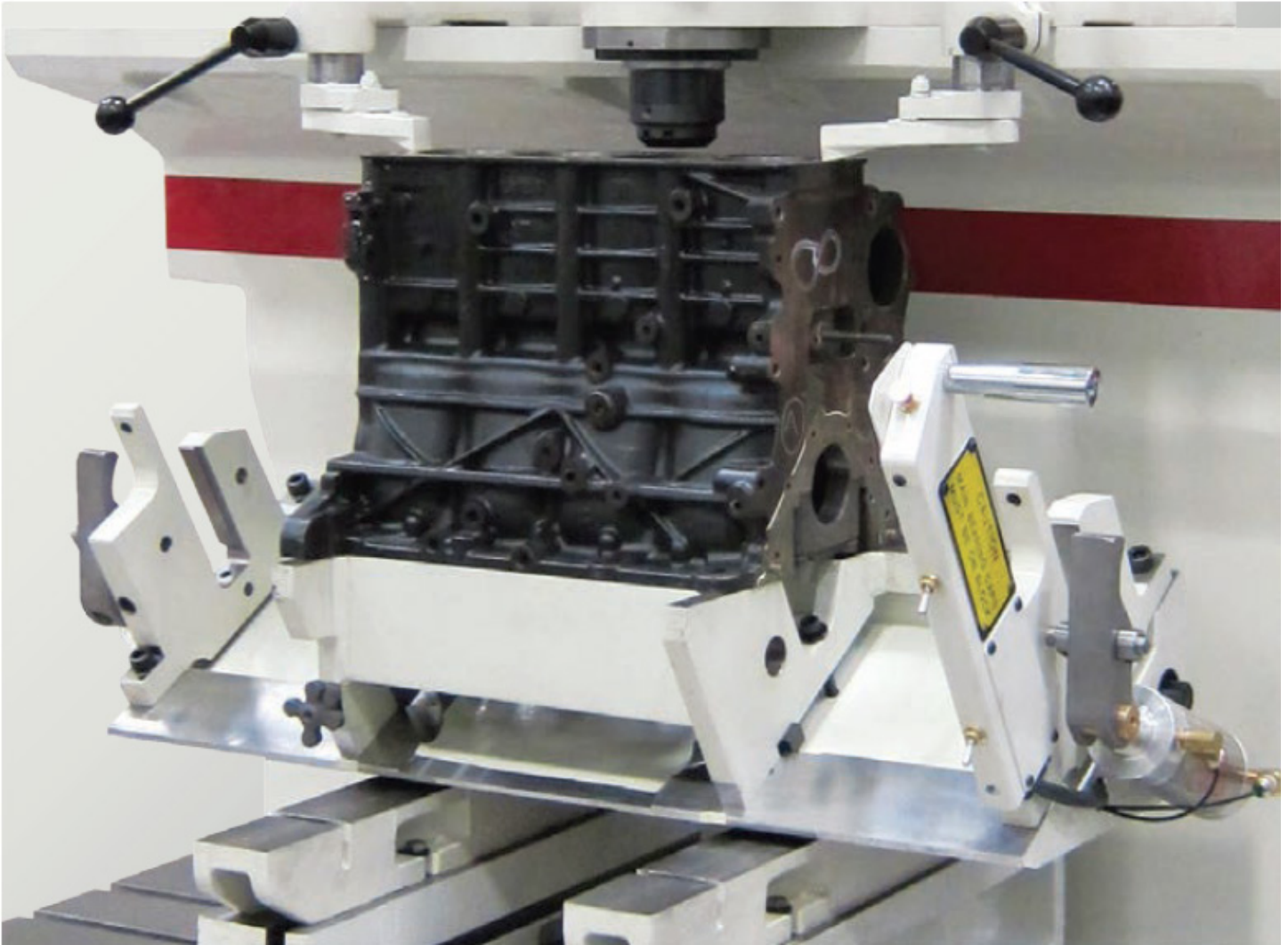
Fixed Angle Fixtures**504-37-10 Production V Block Fixture**

For fixturing 60 and 90 degree blocks (Includes integral pneumatic clamping system and required parallels)



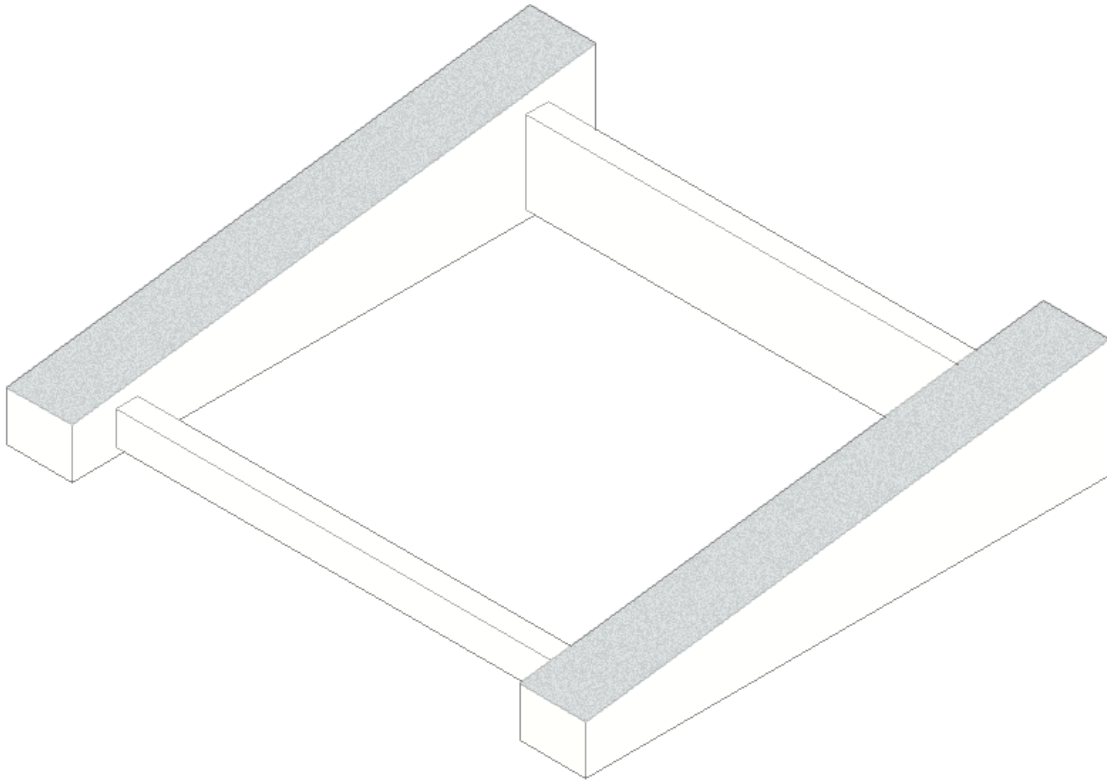
502-3-48Q In-line Block Frame

For V Block Fixture (requires 502-1-72F fixture for FA series or 504-37-10 fixture for FX series)



502-3-49 VW 15-degree V Block Fixture

Also for Ford Mazda & Isuzu 75-degree (requires 502-1-72F fixture for FA series or 504-37-10 fixture for FX series)



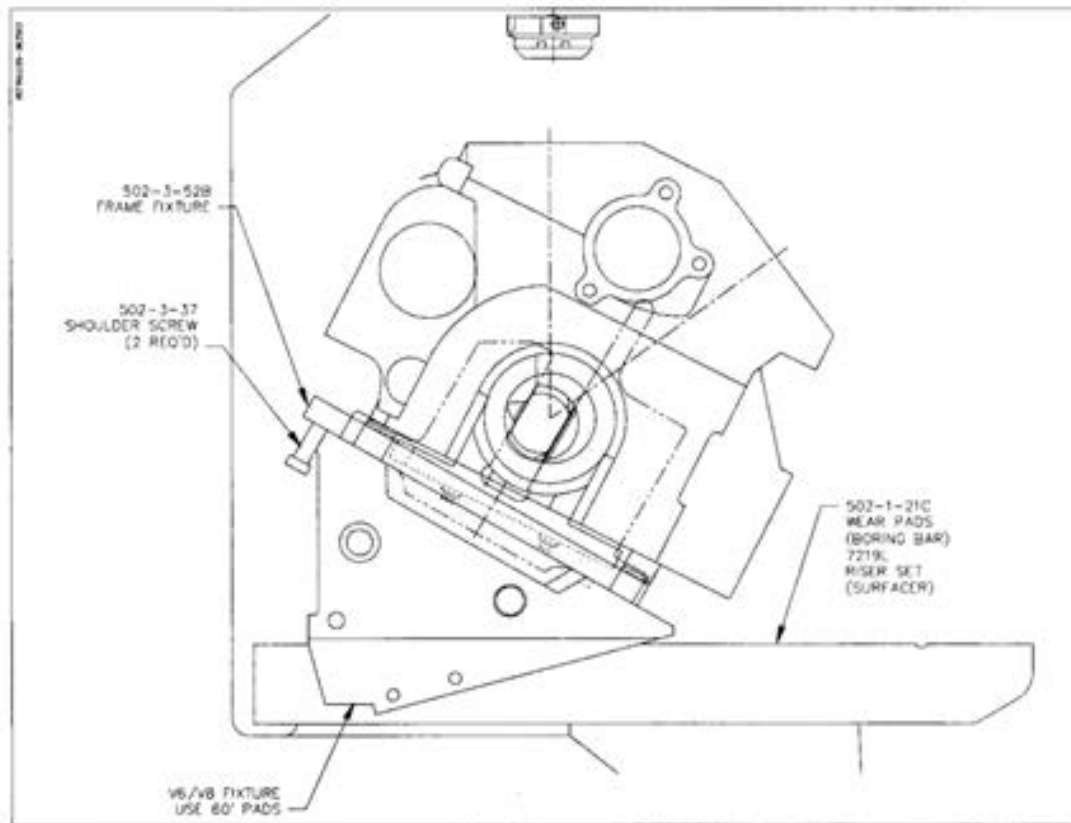
502-3-52 Cadillac Catera 54-degree V Block Fixture

(requires 502-1-72F fixture for FA series or 504-37-10 fixture for FX series)

502-3-52 Cadillac Catera 54 Deg. V6 fixture

This fixture is designed to be used with a customer's V8/V6 block fixture on either an SF series surfer or an F series boring machine. Clamping the block will be the same as clamping other v-blocks in the V8/V6 fixture. The fixture, with (2) 502-3-37 shoulder screws installed, hangs over the top edge of the V8/V6 fixture. The V8/V6 fixture is positioned using

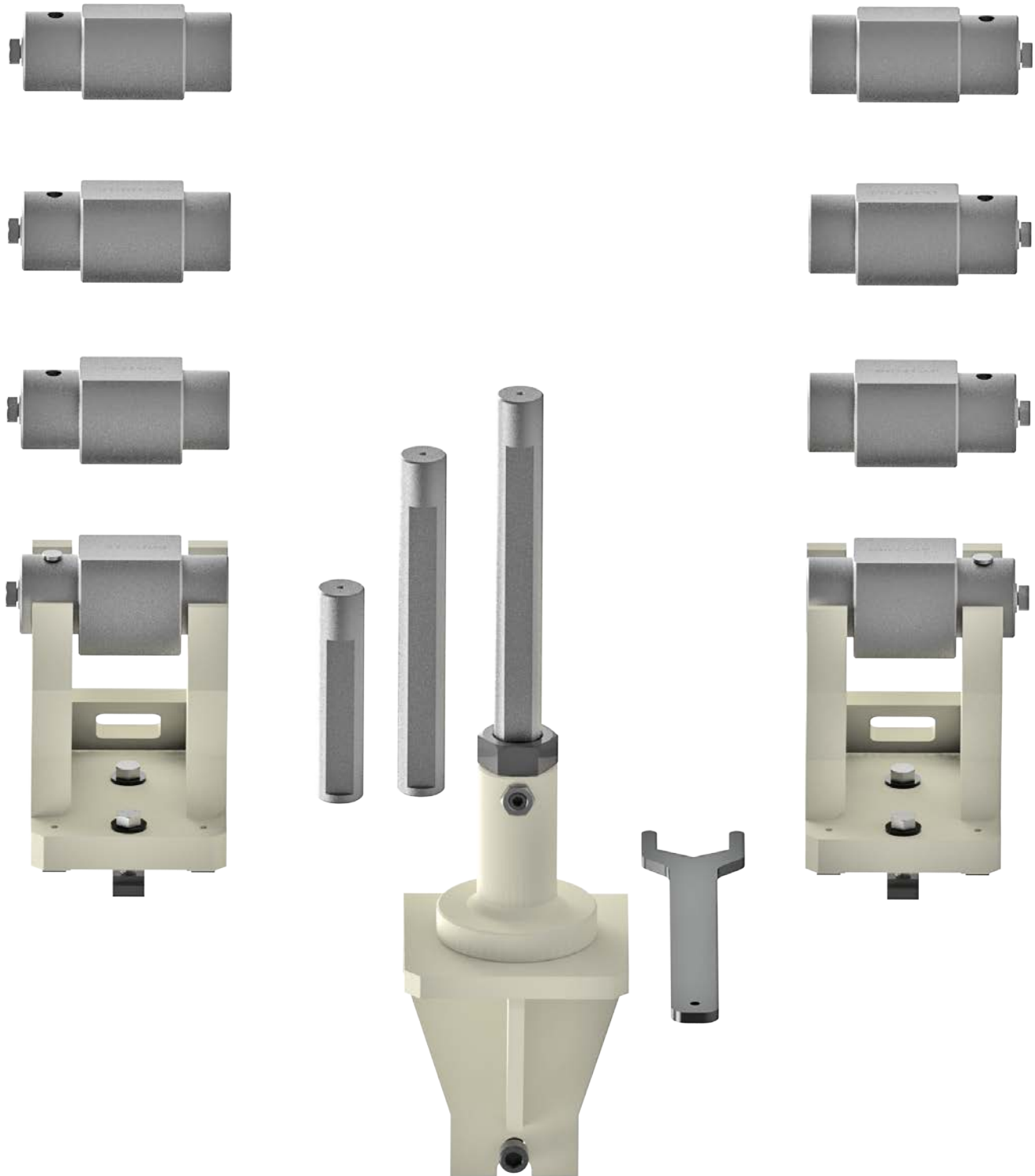
the 60 deg. pads on either 502-1-21C wear pads (F-series boring bar) or 7219L riser set (SF series surfer). This block incorporates a main bearing cap support frame which ties the caps together. When loading the block, the pan rails rest on the milled surfaces of the fixture with the cap support frame hanging inside the rails of the fixture..



Adjustable Angle Fixtures

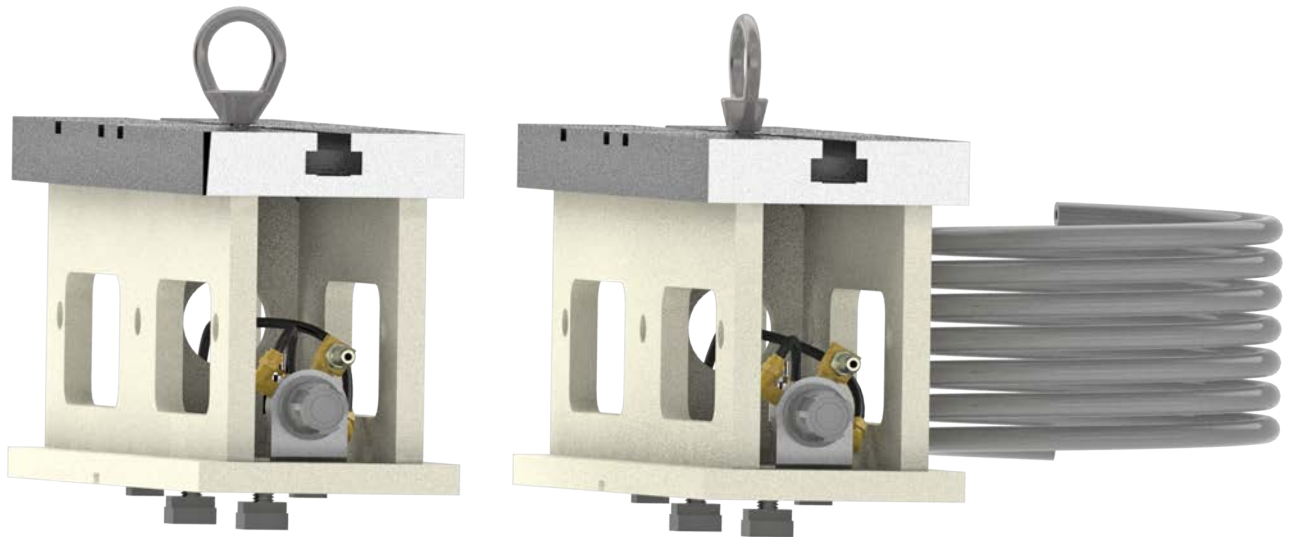
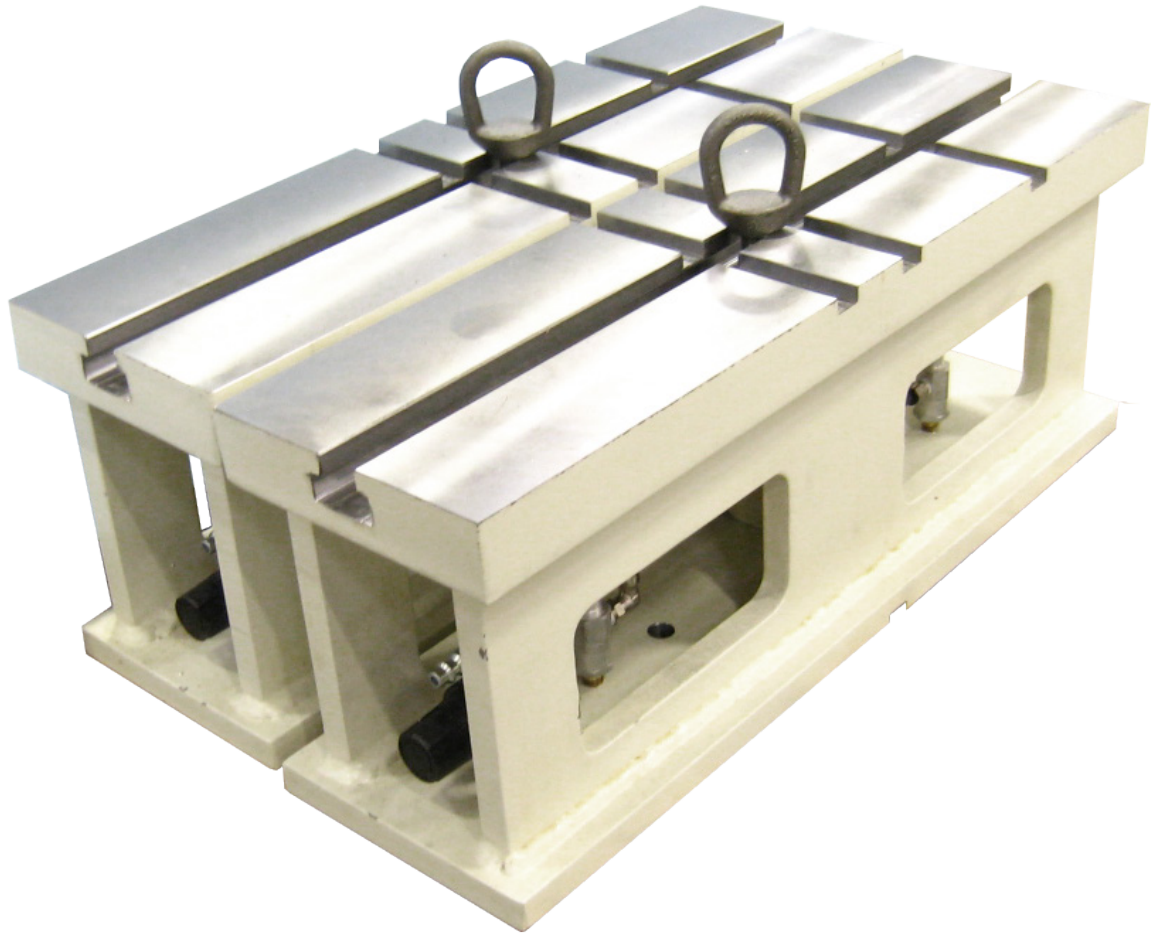
7243 Mid-size Diesel Block Fixture

Includes (4) pair main bearing locators to cover 3 - 5" (76.2 - 127mm) main line diameter range.

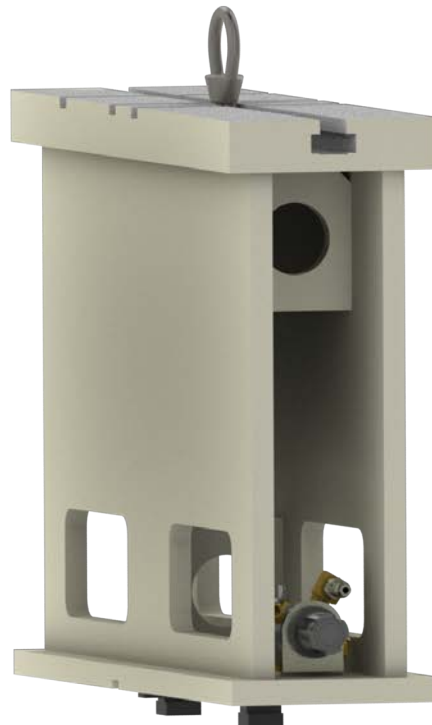
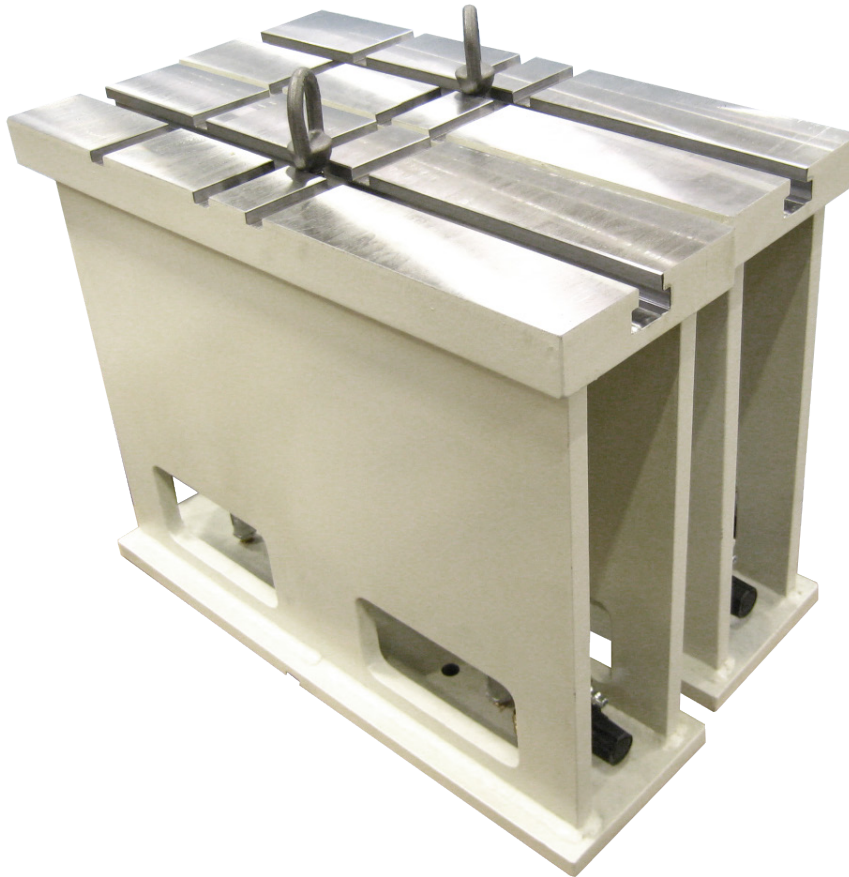


Parallels

11112 Universal 8" (203mm) Heavy Duty T-Slot Parallels with Air Float

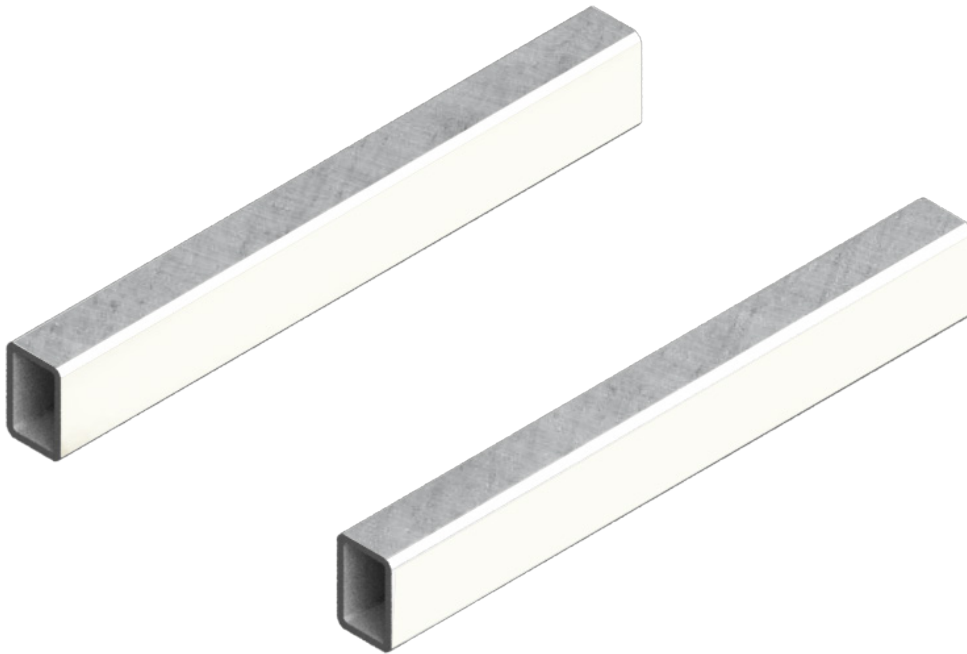


11114 Universal 16" (405mm) Heavy Duty T-Slot Parallels with Air Float



11115 2" (50mm) X 3" (75mm) Parallels

For general purpose machine work such as setting up in-line blocks on the pan or small single cylinders.

**Miscellaneous Options****7152A Dual Axis Level Assembly**

Boring and Sleeving Cutterhead Assemblies

Included tooling, cutting inserts and micrometer, see F9A & F10A Options for details of each assembly

504-35-12A Production Cutter Head

Heavy Duty 4.5 x 9" (115 x 230mm) Diameter Complete with Tooling and Digital Micrometer as listed below..

900-2-20	Universal Micrometer Assembly Digital Reading (inch and metric) for 3/4" tooling
6259P	(1) Tool Holder 3-1/8" (79.375mm) long
6259C	(1) Tool Holder 3-3/8" (85.725mm) long
6259D	(1) Tool Holder 3-5/8" (92.075mm) long
6259I	(1) Tool Holder 3-7/8" (98.425mm) long
6259E	(1) Tool Holder 4-1/8" (104.775mm) long
6259F	(1) Tool Holder 4-5/8" (117.475mm) long
6259G	(1) Tool Holder 5-1/8" (130.175mm) long
600-20-6A	(1) Set of Centering Fingers 3-1/2" (88.90mm)
600-20-6B	(1) Set of Centering Fingers 4-5/8" (117.475mm)
6598K	(1) Triangular Indexable insert holder assembly, positive rake, 2-15/32" (62.713mm) long
6598M	(1) Triangular Indexable insert holder assembly, positive rake, 1-3/8" (34.925mm) long
RT321	(1) Insert, triangular positive rake, 3/8 1/64" (.406mm) radius, general purpose and sleeving
RT322	(1) Insert, triangular positive rake, 3/8 1/32" (.787mm) radius, general purpose and sleeving
511-29-12D	(1) Torx wrench for cartridge tool holders
6260L	(1) Square indexable insert holder assembly, negative rake
6260W	(1) Square indexable insert holder assembly, negative rake-offset
RS322	(1) Insert, square negative rake, 1/32" (.787mm) radius, 3/8 IC, black ceramic coated for high speed oversize through boring



600-8-4L Production Cutterhead 3.250 - 5.0" (82.5 - 127mm) diameter

Complete with Tooling and Digital Micrometer



502-13M Production Stub Cutterhead 2.19 - 4.1" (55.6 - 104mm) Diameter X 6.375" (162mm) Length

Complete with Tooling and Digital Micrometer

